

# COVID WATCH

Summary of Los Angeles County Department of Public Health (LAC DPH)  
COVID-19 Related Surveillance

Updated: 1-20-2023  
MMWR Week: 2  
Ending on: 1-14-2023

To subscribe to LAC DPH Viral Respiratory Illness Surveillance Updates  
email "Subscribe" to [fluwatch@listserv.ph.lacounty.gov](mailto:fluwatch@listserv.ph.lacounty.gov)

## COVID-19 At a Glance

Virology	Activity	Severity
<b>8.1%</b> of specimens tested at Los Angeles <b>sentinel surveillance laboratories*</b> in week 2 were positive for SARS-CoV-2, which is <b>less than</b> in week 1.	In week 2, <b>5.3% of ED visits</b> were for COVID-19, which is <b>less than</b> in week 1.  Visits for influenza-like illness accounted for <b>4.1 %</b> of emergency department visits in week 2, which is <b>less than</b> in week 1.	<b>COVID-19</b> was reported as a cause for <b>7% of deaths</b> registered in LAC during week 52.  <b>Pneumonia, influenza, and COVID-19</b> accounted for <b>14%</b> of all deaths registered LAC during week 52 which is <b>less than</b> in week 51.
Variants		
Of specimens sequenced in week 51** <b>100%</b> were Omicron.  Omicron subvariant <b>BQ.1.1</b> was detected in <b>34.2%</b> of sequenced specimens. Omicron subvariant <b>XBB (including XBB.1.5)</b> was detected in <b>6.8%</b> of sequenced specimens. <b>XBB.1.5</b> was detected in <b>3.7%</b> of all sequenced specimens.		

\* See indicator specific sections for associated methods.

\*\* Whole Genome Sequencing results are lagged.

LAC DPH prepares this newsletter to summarize current COVID-19 and respiratory illness surveillance data in Los Angeles County. Because the COVID-19 pandemic is evolving rapidly, our methods, systems, and data are being added and revised constantly.

***Weekly surveillance data are preliminary and subject to change.***

Daily counts of cases and deaths are available on the LAC DPH website at [http://dashboard.publichealth.lacounty.gov/covid19\\_surveillance\\_dashboard/](http://dashboard.publichealth.lacounty.gov/covid19_surveillance_dashboard/).

\* LAC DPH surveillance data excludes the cities of Long Beach and Pasadena.

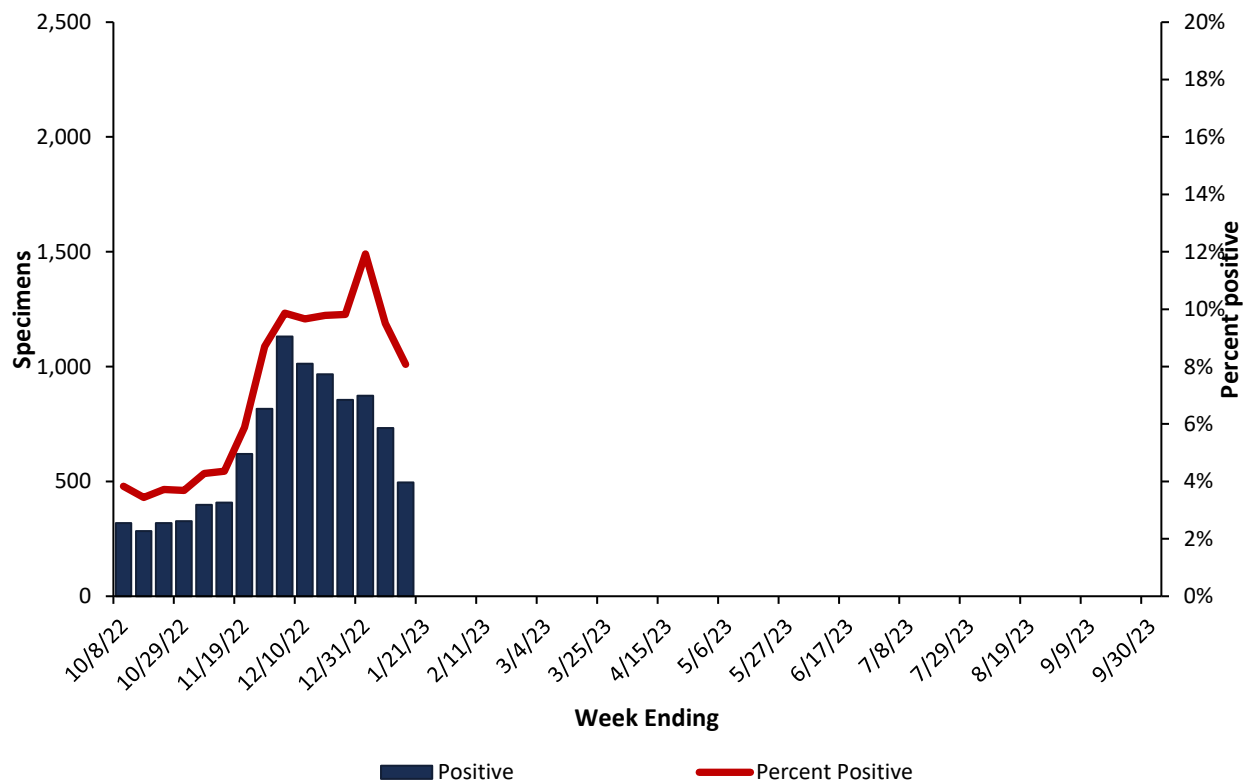
\*\* The respiratory virus surveillance period starts with MMWR week 40 and runs through week 39 of the following year. The 2022-23 season started on Oct 2, 2022.



## Virologic Surveillance

Viral surveillance data is provided by clinical laboratories serving hospitals and healthcare networks across Los Angeles County. Participating laboratories provide the number of positive tests and total number of specimens tested for SARS-CoV2, influenza and respiratory syncytial virus. Data reported from viral surveillance laboratories will differ from the [overall county testing data](#) because of differences in the population tested, types of tests used, and changes in the number of laboratories conducting testing over time.

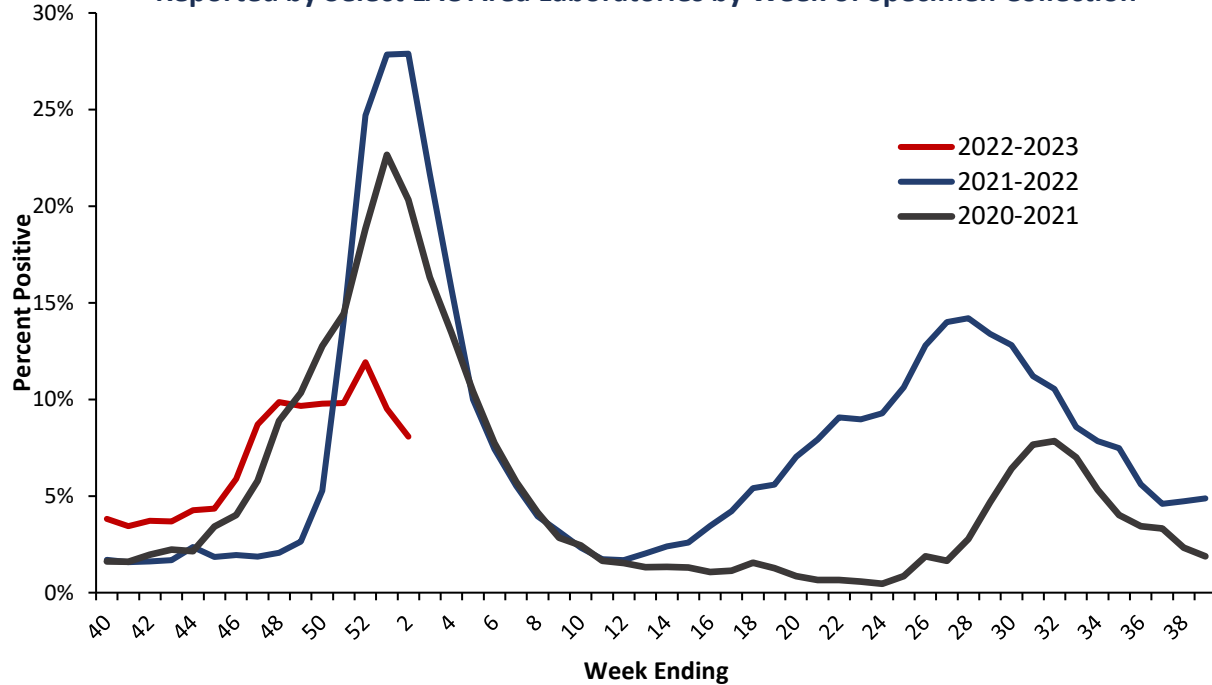
**Figure 1. SARS-CoV-2 Positive Respiratory Specimens and Percent Positive Reported by Select LAC Area Laboratories by Week of Specimen Collection**



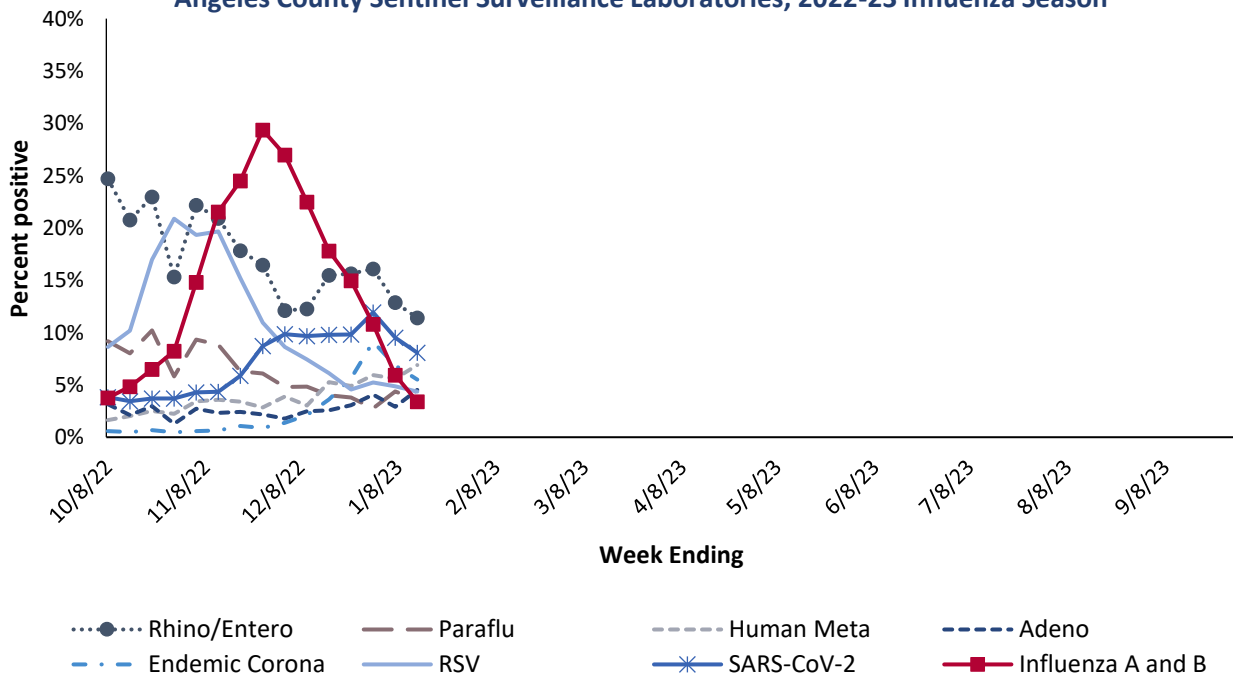
**Table 1. Respiratory Specimens tested for SARS-CoV-2 at LAC Sentinel Laboratories, this week and season to date**

	This Week*	Previous Week*	Data Cumulative Since October 2, 2022 (Week 40)
<b>Number of specimens tested</b>	6131	7710	1,34,281
<b>Number of positive specimens (%)</b>	495 (8.1%)	733 (9.5%)	9,555 (7.1%)

**Figure 2. Percent Positive of Respiratory Specimens Tested for SARS-CoV-2 Reported by Select LAC Area Laboratories by Week of Specimen Collection**



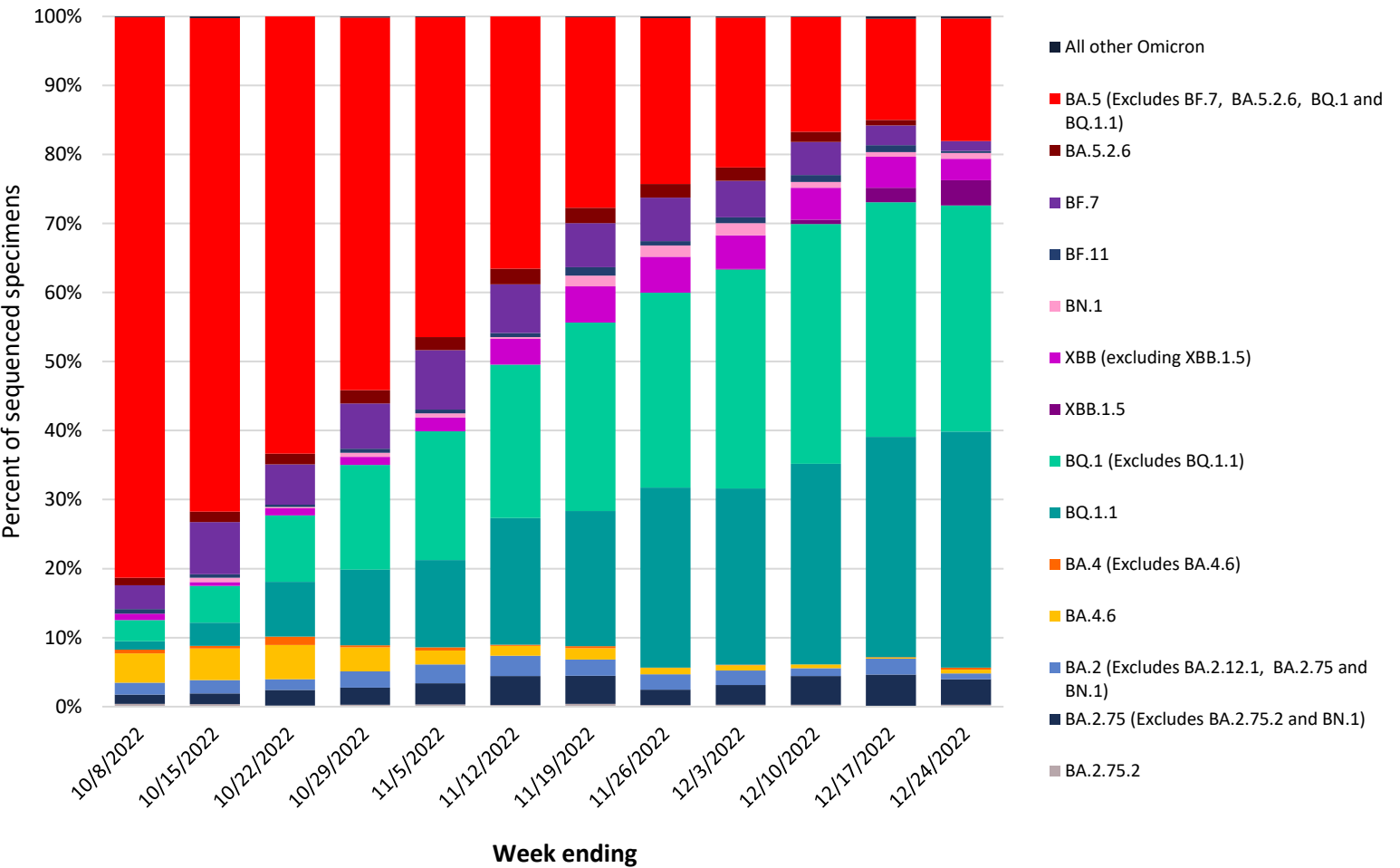
**Figure 3. Percentage of Respiratory Specimens Testing Positive by Viral Etiology, Los Angeles County Sentinel Surveillance Laboratories, 2022-23 Influenza Season**



## SARS-CoV-2 Genomic Surveillance

To track the circulation of SARS-CoV-2 [variants](#) in Los Angeles County, DPH receives whole genome sequencing results for specimens collected from Los Angeles County residents. Data presented here come from the LAC DPH Public Health Laboratory, clinical, commercial, and academic laboratory partners. The proportion of cases sequenced varies over time; generally sequencing results are available for 20%-30% of cases. Whole genome sequencing data has a reporting lag time of 2-3 weeks.

**Figure 4. Variants of Concern as a percentage of all specimens sequenced for baseline surveillance in the past 12 weeks, by specimen collection date**



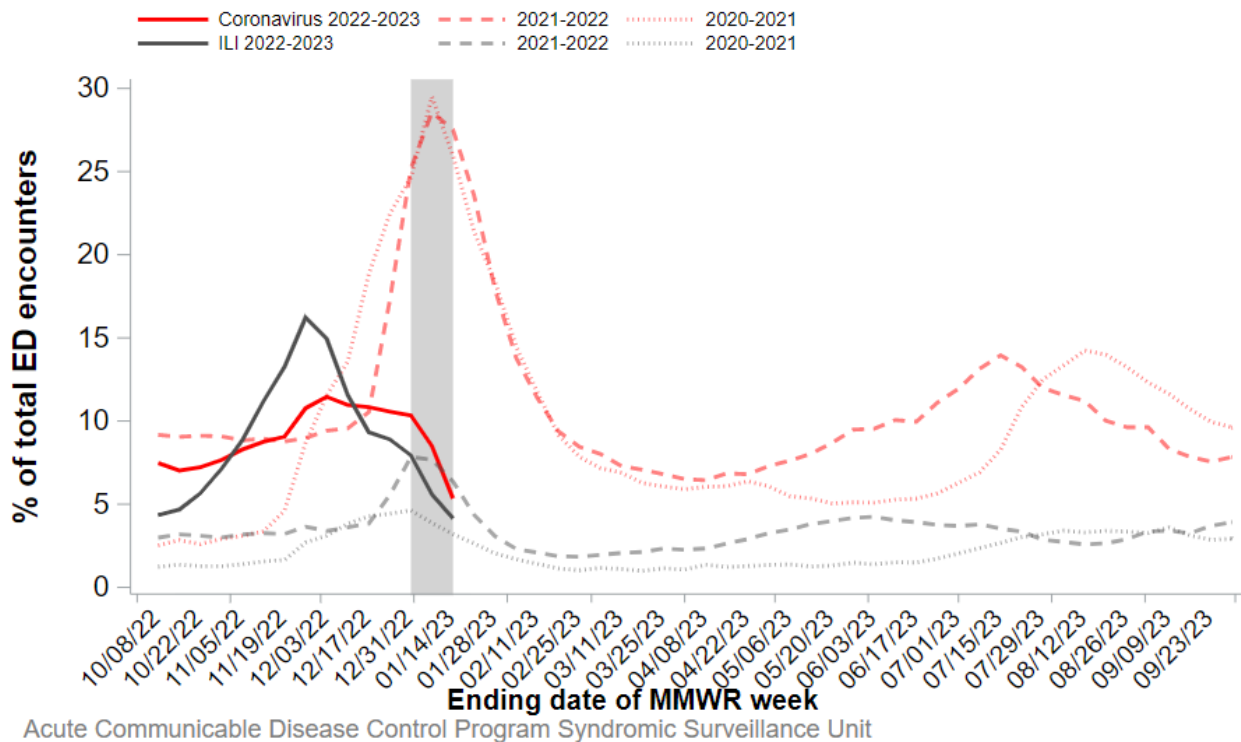
\*Includes descendant lineages

## Activity

### Los Angeles County Emergency Department (ED) Influenza-Like Illness (ILI) and COVID-19 Visits

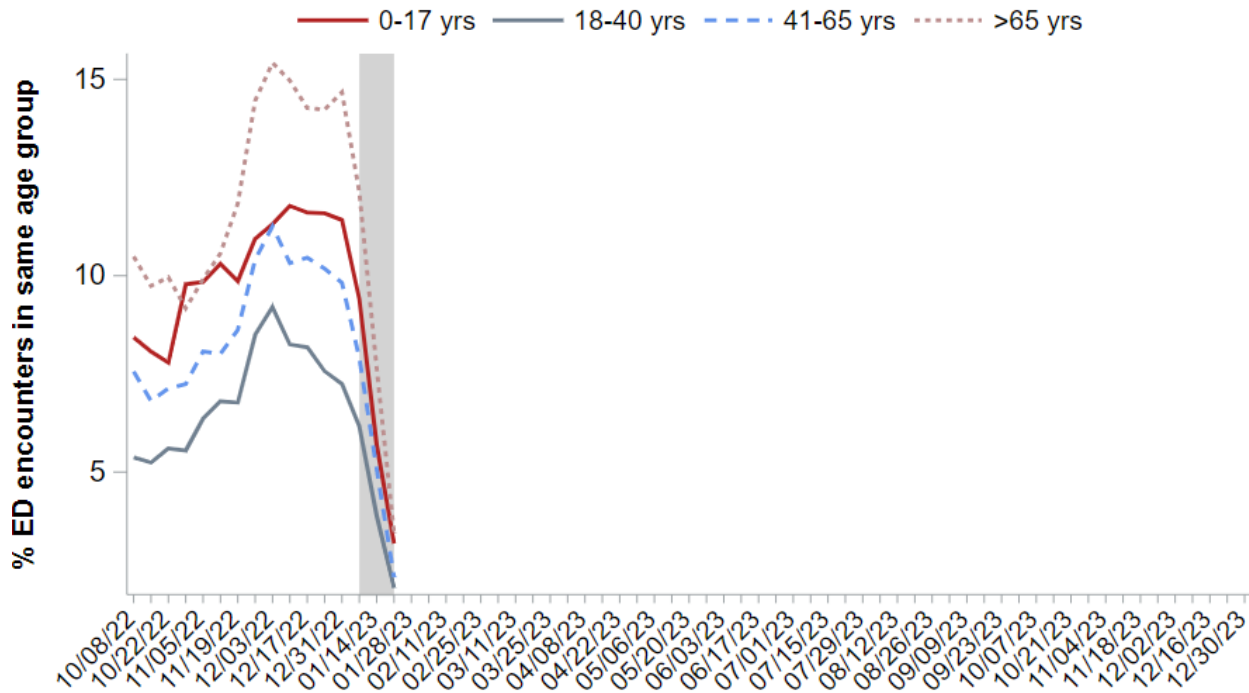
Public Health's Syndromic Surveillance Project monitors initial self-reported symptoms from patients presenting to participating emergency departments throughout LAC. These symptoms are categorized into different clinical syndromes according to specific code words. Visits are included in the COVID-19 category if the chief complaint field includes any mention of "COVID", "Coronavirus" or similar key words. The syndrome of ILI is defined as mention of influenza; or fever (subjective or measured greater than 100°F) plus cough or sore throat. The ILI and COVID-19 classified ED visits for all ages and by age group are analyzed weekly and year-round. The COVID-19 and ILI categories are not mutually exclusive.

**Figure 5. Emergency Department Visits for Influenza-like Illness and COVID-19 per MMWR week, Los Angeles County, 2022-23 Influenza Season**



Acute Communicable Disease Control Program Syndromic Surveillance Unit

**Figure 6. Emergency Department Visits for COVID-19 by Age Category per MMWR week, Los Angeles County, October 2021 Through Present**



**Figure 7. Emergency Department Visits for Influenza-like Illness by Age Groups per MMWR Week, Los Angeles County, October 2021 through Present**

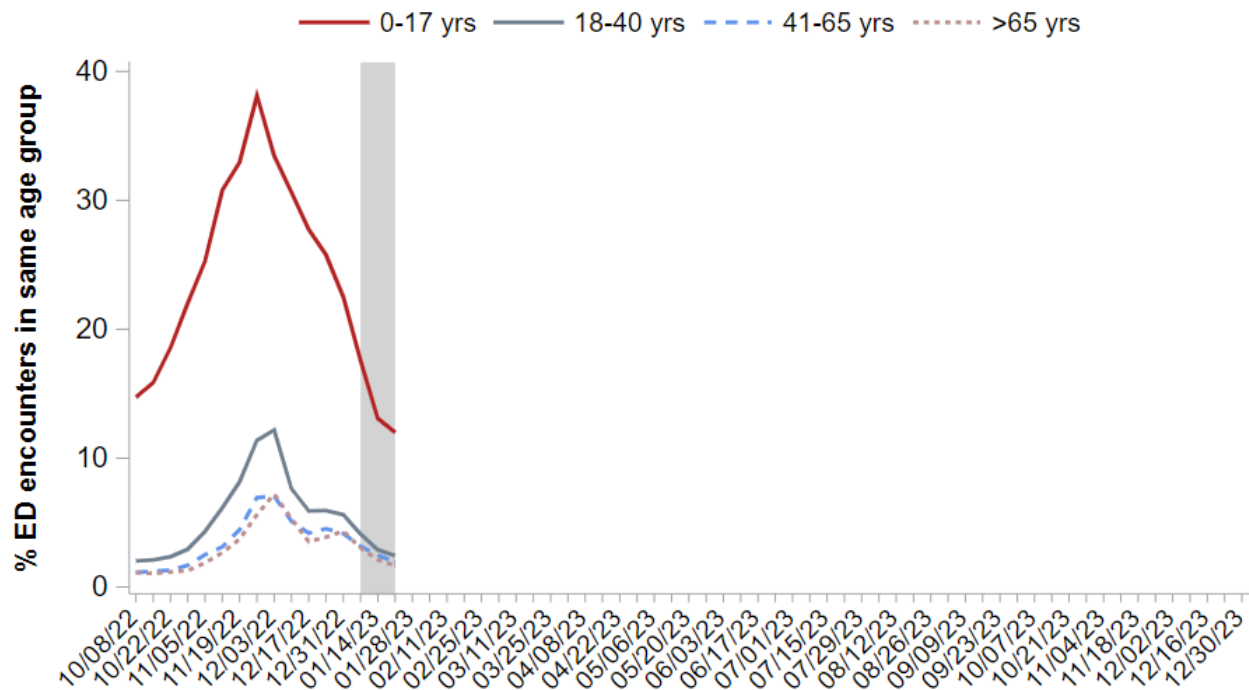
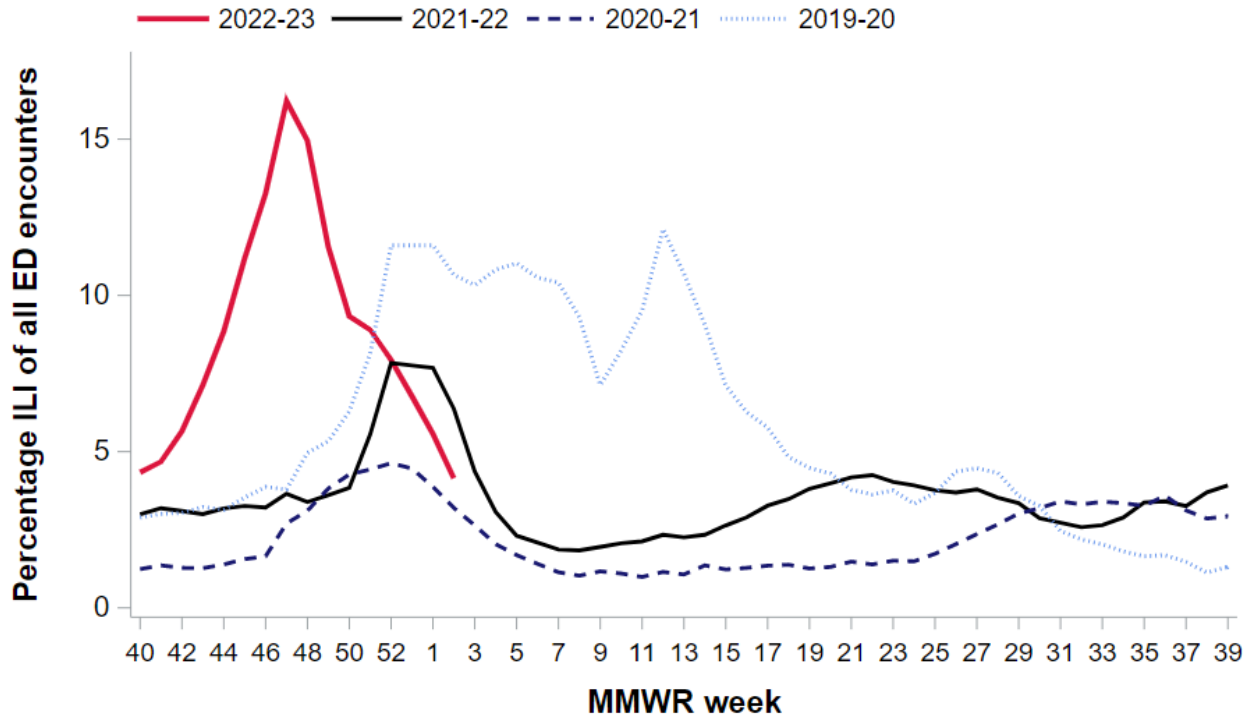


Figure 8. Emergency Department Visits for Influenza-like Illness, per 1,000, Los Angeles County 2019-20 through 2022-23 Influenza Seasons



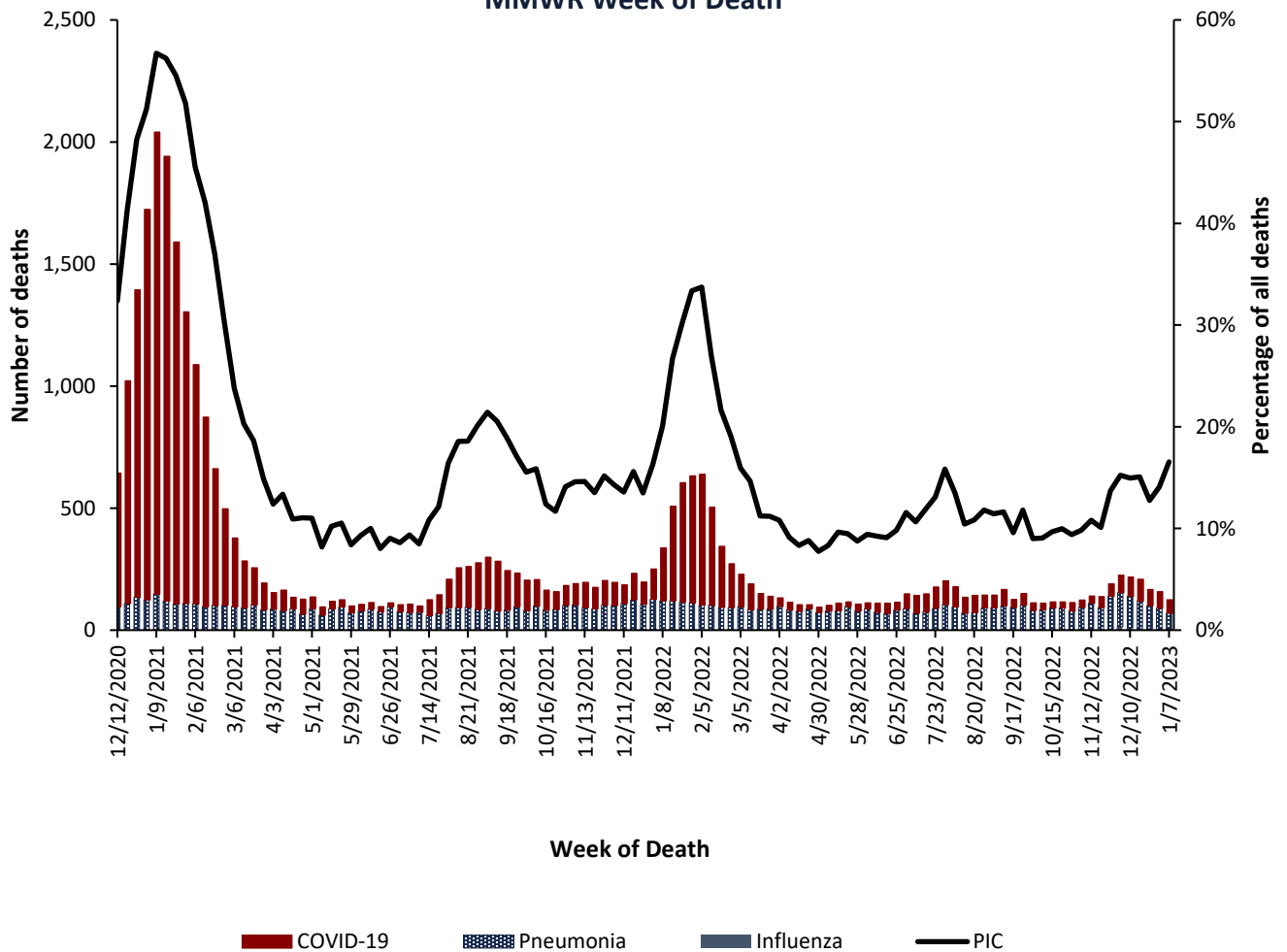
Acute Communicable Disease Control Program Syndromic Surveillance Unit

## Severity

### Pneumonia, Influenza and COVID-19 Mortality

Each week, the Office of Health Assessment and Epidemiology at LAC DPH reports the total number of death certificates received and the number of those for which pneumonia, influenza, or COVID-19 (PIC) was listed as the underlying or contributing cause of death by age group.

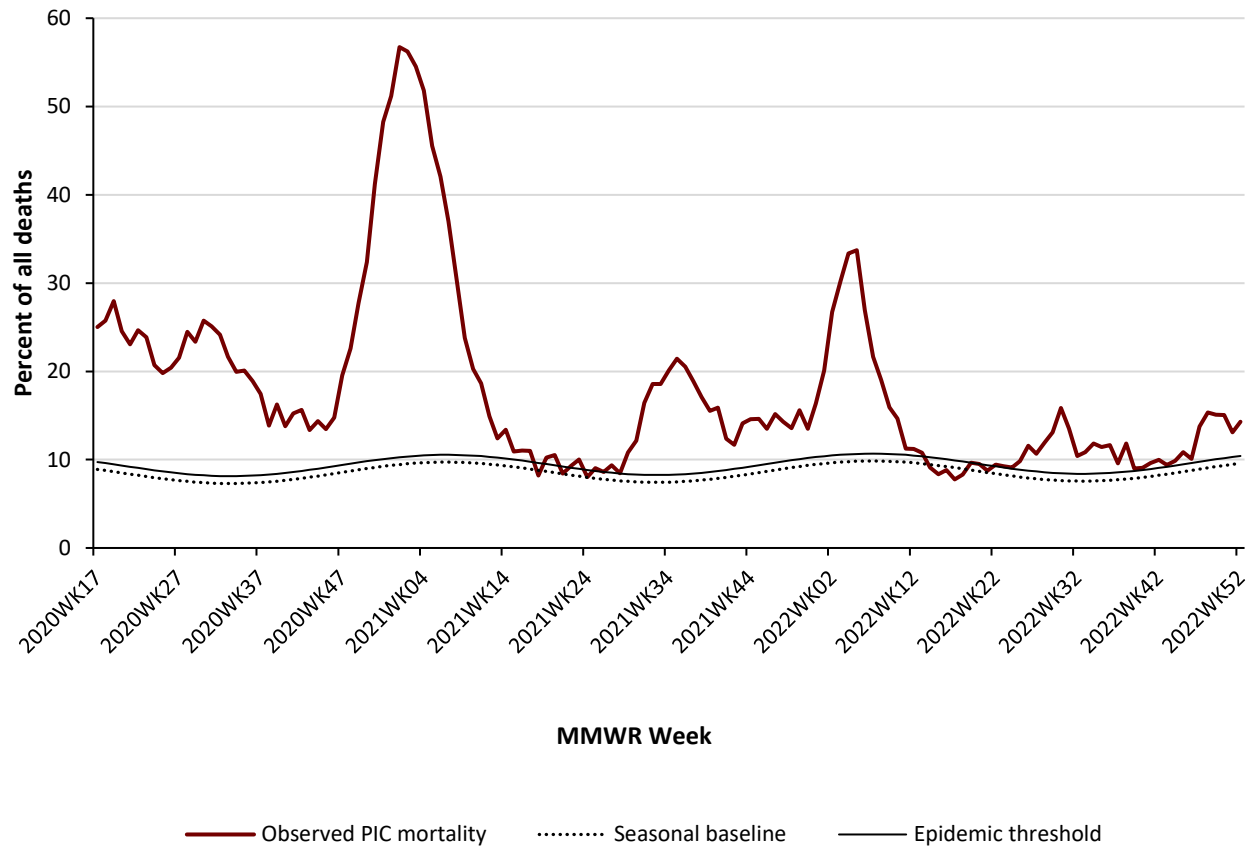
Figure 9. Pneumonia, Influenza, and COVID-19 Deaths Registered in LAC, by MMWR Week of Death





**Figure 10. Pneumonia, Influenza, and COVID-19 Mortality  
Los Angeles County\***

Data through January 7, 2022, as of January 14, 2022



\*excluding Long Beach and Pasadena

**Technical note:** The number of deaths reported in recent weeks does not represent all deaths that occurred in the reporting period. Data may be incomplete due to a lag between when the death occurred and when the death was registered. Previous weeks counts or percentages may change as vital records are updated with lagged death certificates. The count includes all certificates of deaths (excludes fetal deaths) occurring in the County of Los Angeles (excluding Long Beach and Pasadena) regardless of the residence of the deceased.

## Angelenos in Action

### Weekly Symptom Survey

[Angelenos In Action](#) is a voluntary text-based public health survey that collects information to monitor COVID-19 symptoms across LA County in real time. Volunteers across LA County provide information on their health as part of a weekly SMS survey. Respondents are assigned to a random day, and then texted once per week about their symptoms. Rates are then calculated weekly.

